



## OPERATION MANUAL RVS SERIES - VORTEX SUMP PUMP

Dear Client,  
 Congratulations on your purchase of this REEFE™ Premium Series Pump.  
 These pumps are developed and manufactured using the latest in technology and advanced electrical and motor parts. Every pump is factory tested so we therefore expect it to reach you in perfect condition.  
 Please check the following points on receipt of your pump:

- (1) Is the pump exactly what you ordered? Please check the nameplate.
- (2) Has any damage occurred during shipment? Are any bolts or nuts loose?

Take the time to read the instructions carefully before using this appliance.  
 We strongly recommend that you keep this instruction manual in a safe place for future reference.

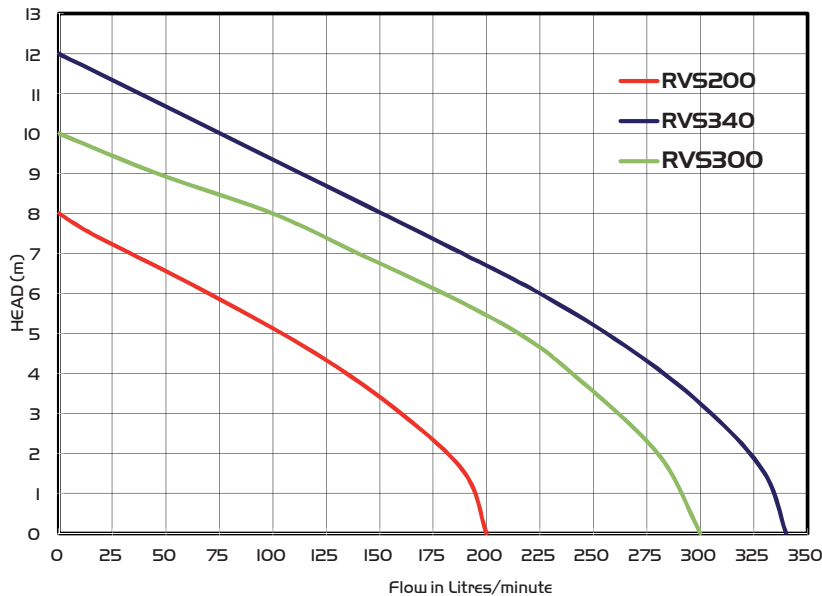




### Specifications<sup>1</sup>

MODEL	POWER		OUTLET		RATED		MAXIMUM		SOLIDS HANDLING (mm)	WEIGHT (KG)	SIZE (LxWxH (mm))
	AMPS	WATTS	MM	INCH	FLOW (L/min)	HEAD (m)	FLOW (L/min)	HEAD (m)			
RVS200	2	250	40	1 1/2	120	4.5	200	8	25	8.5	190x130x360
RVS300	4.0	400	50	2	220	5.0	300	10	30	12.5	220x150x360
RVS340	4.4	550	50	2	225	6.0	340	12	35	13	240x150x360

Check the nameplate for your pump's specification as per the table list.  
 Do not exceed the given specifications in the use of your pump.

Performance Curves:



	DANGER	Keep the pump equipment protected from interference by children!
	WARNING	This pump is designed for water only. It must <b>NOT</b> be used for Hazardous or flammable liquids or in areas where these substances are in use.

1. Specifications are approximate and subject to change without notice at Ramdex Industries discretion.  
 3. The RVS200 uses 60% less power when compared with a 750w Pump delivering 180L/min at 2.0m head

## LIMITATIONS

The RVS series of pumps are suitable to pump water, with soft particles, as per the specification chart.

The water temperature may be from + 5°C to 40°C Max.



The pump cannot be used for salt water and inflammable, corrosive, explosive or dangerous liquids.

Ensure that the pump never runs without water.

## INSTALLATION GUIDELINES

1. Before installing or servicing this pump, be certain the pump power source is disconnected.
2. Do not position the pump where it could get the float caught and run dry.
3. Ensure all fittings and joints are watertight.
4. Installation and electrical wiring must adhere to state and local codes and must be completed before using pump.  
All Electrical wiring must be performed by a licenced Electrician
5. (a) Pump should be connected to a separate 15 amps circuit, with a RCD (safety switch) installed  
Note: Plugging into existing outlets may cause low voltage supply to the motor, causing blown fuses, tripping of motor overload, or burnt out motor.  
(b) Surge Protection - We recommend that a surge protector is used to protect the electronics of this pump, as damage due to power surges is not covered by the Limited Warranty
6. REEFE RVS pumps come with a grounding conductor and an earthed power plug and all electrical installations must be earthed.  
All electrical wiring must be performed by a licenced Electrician.
7. Voltage of power supply must match the voltage of the pump - 240 volt
8. WARNING - REEFE™ pumps are not designed for and CANNOT be installed in locations classified as hazardous.
9. The following may cause severe damage to pump and will void warranty:
  - (a) Using an extension cord.
  - (b) Cutting the earth pin off the plug or using an adapter fitting or double adapter.
  - (c) Working on pump while switched on.
  - (d) Removing motor housing, unscrewing impellor, or otherwise removing impellor seal
  - (e) Pumping chemicals or corrosive liquids.
  - (f) Pumping other flammable liquids.
  - (g) Pumping hot liquids. (Exceeding 40 centigrade)
  - (h) Picking up the pump using the power cable
10. PUMP USAGE
  - (a) Dry operation will destroy the pump seals and is not covered by warranty.
  - (b) If the pump does not pump water, check the discharge pipework is free from airlocks, other obstructions and refer the TROUBLE-SHOOTING section.
11. OVERLOAD PROTECTION  
This pump has a built in thermal protection switch. The pump stops if an overload condition occurs. The motor restarts automatically after it has cooled down when the built in thermal protector resets itself. If this problem reoccurs - check as per Trouble Shooting
12. IMPORTANT NOTES
  - (a) Do not switch the pump on and off frequently, as this will cause damage to the electronics and void warranty.
  - (b) If the pump is idle for a long period of time or in very low temperature, it should be removed, washed clean and stored in a safe place.

## WARRANTY RECORD – FILL IN AND RETAIN THIS WITH YOUR ORIGINAL PURCHASE RECEIPT

PURCHASER NAME.....

PHONENO.....DATE OF PURCHASE ...../...../..... DEALER/STORE NAME.....

.....DEALER SUBURB/TOWN.....PHONE

NO.....

MODEL NUMBER OF PUMP (commences with RVS).....SERIAL/BATCH NUMBER

(THIS IS GENERALLY A 6 or 8 DIGIT NUMBER PRINTED ON THE LABEL OF THE PUMP NOT THE "ORDER CODE" or "MODEL NUMBER")

If you cannot locate the serial number printed on the label of the pump, please record the barcode number off the packaging

Do NOT send this form to us. Retain it with your receipt.

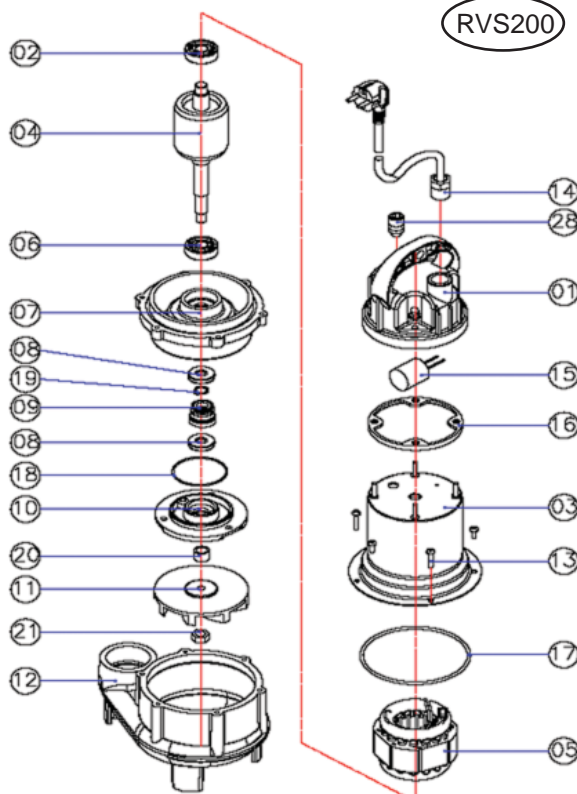
### PRIVACY STATEMENT

We will not use your address or phone or fax number, or email address for marketing, nor sell or provide it to any other third party for the purpose of marketing.

## 24 Month Limited Warranty Conditions

1. Warranty covers only motor failure and manufacturing defects within a 24 month period from date of purchase for Reeve™ RVS pumps purchased and used in mainland Australia
2. Faults arising due to: - Accidents, misuse, not following these instructions or power surges/spikes/brownouts will not be covered by this warranty
3. Warranty will be void if any tampering or removal of identification labels or electrical cables has occurred.
4. The costs of loss of livestock, damage to property, consequential losses or injury caused by the mis-use or abuse of this appliance is not covered by this warranty.
5. Faults caused by installation or improper servicing will not be covered. In addition defects stemming from improper maintenance are not covered.
6. Warranty is void if this pump is used for pumping anything other than water or dirty water.
7. In the case of pump failure, you MUST:
  - 1) Check the trouble shooting guide overleaf first and rectify the problem if it is not a fault of the pump.
  - 2) If it is definitely faulty, return to the place of purchase for a replacement or refund OR
  - 3) Call us on 1300 726 339 for a replacement - we will require a copy of proof of purchase
8. For any warranty claim to be valid, an original proof of purchase must be supplied or an acceptable substitute, and the warranty record information above must be filled in, and presented for any warranty claim to be honored.
9. If an exact replacement is not possible the closest equivalent product will be supplied at Ramdex Industries discretion.
10. This product is guaranteed as fit for the purpose of use as stated on the outer packaging, and NO other use.
11. Our goods come with guarantees that cannot be excluded under the Australian Consumer Law. You are entitled to a replacement or refund for a major failure and for compensation for any other reasonably foreseeable loss or damage. You are also entitled to have the goods repaired or replaced if the goods fail to be of acceptable quality and the failure does not amount to a major failure. If you (the purchaser) do not fall within the meaning of 'consumer' in the Australian Consumer Law some provisions of the Australian Consumer Law may not apply to you

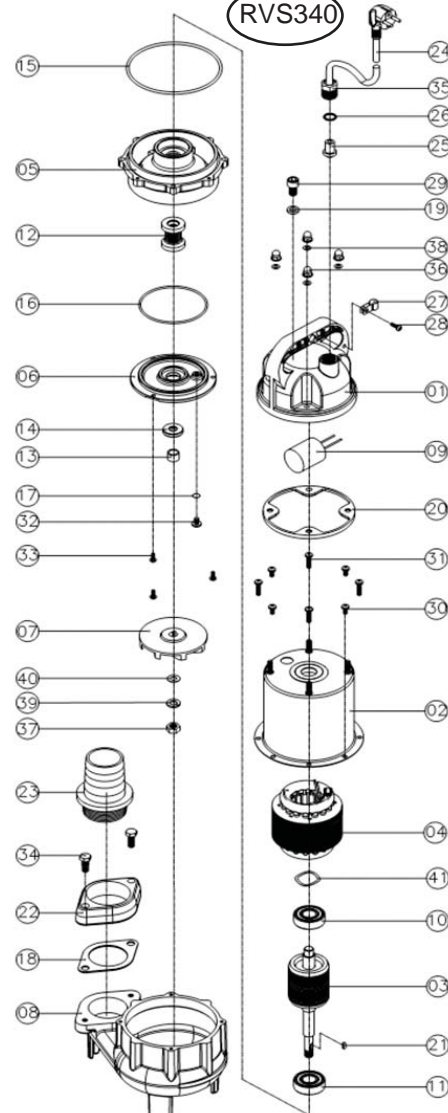
### SECTION DRAWING



RVS200

#### NO. Description

- |                   |                        |
|-------------------|------------------------|
| 1 Top Cover       | 12 Pump Casing         |
| 2 Upper Bearing   | 13 Motor Housing Screw |
| 3 Motor Housing   | 14 Cable Gland         |
| 4 Shaft           | 15 Capacitor           |
| 5 Stator          | 16 Cap Gasket          |
| 6 Lower Bearing   | 17 O-Ring              |
| 7 Seal Plate      | 18 O-Ring              |
| 8 Oil Seal        | 19 C Retaining Ring    |
| 9 Mechanical Seal | 20 Sleeve              |
| 10 Seal Cover     | 21 Nut                 |
| 11 Impeller       | 28 Plug Screw          |



RVS340

#### NO. Description

- |                    |                       |
|--------------------|-----------------------|
| 1 Upper Cover      | 24 Cable              |
| 2 Motor Housing    | 25 Cable Head         |
| 3 Shaft            | 26 Cable Fasten Plate |
| 4 Stator           | 27 Cable Fasten Clip  |
| 5 Seal Plate       | 28 Screw              |
| 6 Seal Cover       | 29 Plug Screw         |
| 7 Impeller         | 30 Screw              |
| 8 Pump Casing      | 31 Screw              |
| 9 Capacitor        | 32 Screw              |
| 10 Upper Bearing   | 33 Screw              |
| 11 Lower Bearing   | 34 Screw              |
| 12 Mechanical Seal | 35 Cable Gland        |
| 13 Sleeve          | 36 Nut                |
| 14 Oil Seal        | 37 Nut                |
| 15 O-Ring          | 38 Washer             |
| 16 O-Ring          | 39 Washer             |
| 17 O-Ring          | 40 Washer             |
| 18 Outlet Gasket   | 41 Wave Washer        |
| 19 Plug Gasket     |                       |
| 20 Cap Gasket      |                       |
| 21 Key             |                       |
| 22 Flange          |                       |
| 23 Discharge       |                       |

## TROUBLESHOOTING CHECKLIST (CAUTION: SHUT OFF POWER TO PUMP)

**Check the following before requesting service or repair.**

**A call out fee may apply to field services and additional labour cost may apply.**

PROBLEMS	POSSIBLE CAUSES
Pump does not run	<ul style="list-style-type: none"> <li>* Circuit breaker or Safety Switch is off or fuse has blown.</li> <li>* Water level in tank is too low to lift the float switch</li> <li>* Pump plug is not connected properly, or has been flooded or wet - Isolate power at main switch, remove plug and allow to dry. If problem continues, contact a licenced electrician.</li> <li>* If all of the above are OK, then check pump for clogged impellor.</li> <li>* If the overload switch has activated, investigate why this has occurred before turning it back on.</li> </ul>
Pump runs but does not deliver water.	<ul style="list-style-type: none"> <li>* Check valve is installed backwards. Arrow on valve should point in direction of flow.</li> <li>* Discharge shut-off valve (if used) may be closed.</li> <li>* Impeller or volute openings are fully or partially clogged. Disassemble pump and clean.</li> <li>* Pump is air-locked. Start and stop several times by plugging and unplugging cord.</li> <li>* Vertical pumping distance is too high. Reduce distance or upgrade to a larger pump.</li> </ul>
Pump runs and does not stop	<ul style="list-style-type: none"> <li>* Float is stuck in up position. Be sure float operates freely in the sump.</li> <li>* Defective float switch. Call our warranty dept on 1300 726 339</li> </ul>
Pump not pumping properly	<ul style="list-style-type: none"> <li>* Too high head or pump under specified - Check specifications.</li> <li>* Too low water level - Check the water levels</li> </ul>
Pump runs but delivers only a small amount of water.	<ul style="list-style-type: none"> <li>* Pump is air-locked. Start and stop several times by plugging and unplugging cord.</li> <li>* Vertical pumping distance is too high. Reduce distance or upgrade to a larger pump.</li> <li>* Too low water level - Check the suction and water levels</li> <li>* Serious damage to the impeller - Impeller or volute openings are fully or partially clogged.</li> <li>* Pump impeller is partially clogged with particles, causing motor to run slow and overload - Dissamble pump and clean. See below</li> </ul>
Fuse blows or circuit breaker trips when pump starts.	<ul style="list-style-type: none"> <li>* Motor stator may be defective, have checked by a licenced electrician, or return for service.</li> <li>* Fuse size or circuit breaker may be too small. (Must be 15 amps or more).</li> <li>* Impeller or volute opening are fully or partially clogged. Dissamble pump and clean.</li> </ul>
Motor runs for a short time, then stops.	<ul style="list-style-type: none"> <li>* Pump impeller is partially clogged with particles, causing motor to run slow and overload. Disassemble pump and clean.</li> <li>* Motor stator may be overheating. Ensure there is water and float switch is not jammed in the up position.</li> <li>* Impeller or volute openings are fully or partially clogged. Disassemble pump and clean.</li> </ul>

If after checking all of the above, and the fault continues,  
**CALL our WARRANTY DEPARTMENT on 1300 726 339,**  
 who will issue authorisation of repair or replacement  
 or return it to the place of purchase for replacement or refund.



### ELECTRICAL PRECAUTIONS

Before servicing a pump, always shut off the power supply and then make sure you are not standing in water and that there is no risk of electrical shock.

If the pump is direct-wired to the electrical circuit, contact your qualified licensed electrician to disconnect if required.

DO NOT ATTEMPT ELECTRICAL REPAIRS OF ANY SORT UNLESS YOU ARE A LICENSED ELECTRICIAN